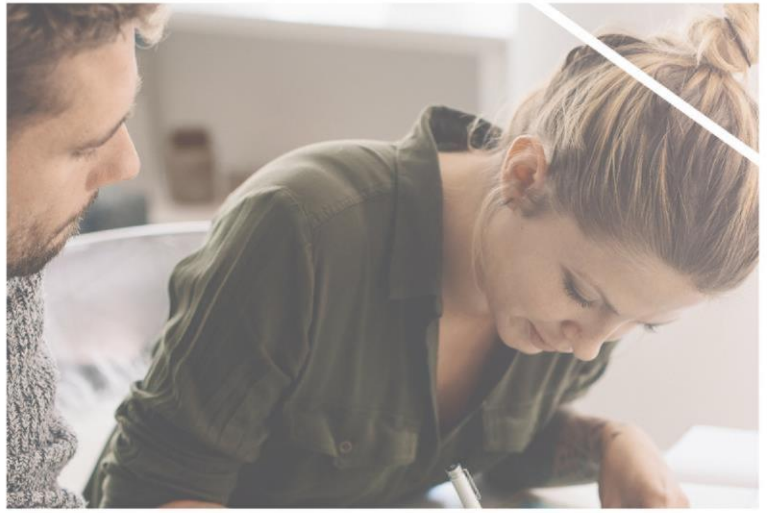




**EUROHOME**  
RELOCATION SERVICES



**Eurohome Relocation Services**

**HOUSING**

**Rental Prices March-April 2023**



All Prices expressed below excluding utilities, internet and service costs.  
 Rental prices below depending on market availability and cannot be guaranteed.

<b>Blue</b>	Lower price
<b>Black</b>	Same price range
<b>Red</b>	Mild price increase
<b>Purple</b>	High price increase

<b>Amsterdam - Center, Zuid, North, Amstelveen, Hoofddorp   Schiphol Airport, Haarlem and Almere)</b>	<b>Rent 2023 Unfurnished (Semi-furnished) Min. – Max.</b>	<b>Rent 2023 Furnished Min. – Max.</b>
<b>AMSTERDAM AREA</b>		
<b>AMSTERDAM (CENTER, PIJP, SOUTH)</b>		
1 bedroom	<b>1600-2500</b>	<b>1700-2800</b>
2 bedroom	<b>1650-2800+</b>	<b>1800-3200</b>
3 bedroom	<b>1800-6000+</b>	<b>1900-5000+</b>
Family house 4/5 BR+	<b>2400-7000+</b>	<b>2400+</b>
<b>AMSTERDAM (NORTH)</b>		
1 bedroom	<b>1300+</b>	<b>1500+</b>
2 bedroom	<b>1400+</b>	<b>1650+</b>
3 bedroom	<b>2000+</b>	<b>2300-5000+</b>
Family house 4/5 BR+	<b>2200+</b>	<b>2300</b>
<b>AMSTELVEEN</b>		
1 bedroom	<b>1400-1800+</b>	<b>1500-2200</b>
2 bedroom	<b>1650-4000</b>	<b>1700-2500+</b>
3 bedroom	<b>1800-4800</b>	<b>1700-3000</b>
Family house 4/5 BR+	<b>1900-6000</b>	<b>2000+</b>
<b>HOOFDDORP - SCHIPHOL AIRPORT</b>		
1 bedroom	<b>1150-1600</b>	<b>1200-1500</b>
2 bedroom	<b>1400-2950</b>	<b>1650-3000</b>
3 bedroom	<b>1700-2900</b>	<b>1900-2800</b>
Family house 4/5 BR+	<b>2000-5500</b>	<b>1750-5400</b>
<b>HAARLEM</b>		
1 bedroom	<b>1300-1900</b>	<b>1400-1850</b>
2 bedroom	<b>1450-1900</b>	<b>1600-2500+</b>
3 bedroom	<b>1600-2400</b>	<b>1750-4100</b>
Family house 4/5 BR+	<b>2000-4300</b>	<b>2350+</b>
<b>ALMERE</b>		
1 bedroom	<b>1200-1600</b>	<b>1450-1750</b>
2 bedroom	<b>1350-1900+</b>	<b>1400-2250</b>
3 bedroom	<b>1500-2300</b>	<b>1500-2750</b>
Family house 4/5 BR+	<b>1800-2800</b>	<b>1950-3200</b>

**International Schools:**

- Amity International School Amsterdam (Amstelveen)
- British School of Amsterdam
- The International School of Amsterdam (ISA, Amstelveen)
- International School Haarlem
- Optimist International School
- Gifted Minds International School
- The Japanese School of Amsterdam
- Winford Bilingual Primary School
- Lycée Français Vincent van Gogh
- International French School of Amsterdam
- Amsterdam International Community School (AICS)
- Amstelland International School
- De Nieuwe Internationale School Esprit (DENISE)
- Amsterdam Liberal Arts & Sciences Academie (ALASCA)

<b>The Hague</b>	<b>Rent 2023 Unfurnished (Semi-furnished) Min. – Max.</b>	<b>Rent 2023 Furnished Min. – Max.</b>
<b><i>The Hague - Scheveningen</i></b>		
1 bedroom	1000-1350+	1150-1600+
2 bedroom	1100-1800+	1300-2300+
3 bedroom	1700-3500+	1800-12500+
Family house 4/5 BR+	1850+	2100+
<b><i>Centre/Archipel/Zeeheldenkwartier</i></b>		
1 bedroom	1050-1700+	1300-1800+
2 bedroom	1350-2000+	1550-2700+
3 bedroom	1550-2500+	1850-3900+
Family house 4/5 BR+	1800-10000+	2000+
<b><i>Benoordenhout, Bezuidenhout, Leidschendam</i></b>		
1 bedroom	1000-1600+	1250-2200+
2 bedroom	1250-2500+	1450-2900+
3 bedroom	1600-3300+	1800+
Family house 4/5 BR+	1800-4500+	2100-4700+
<b><i>Statenkwartier en Duinoord</i></b>		
1 bedroom	1300-1700	1550-2300
2 bedroom	1500-2300	1800-3000+
3 bedroom	1650-2700	1800-5500+
Family house 4/5 BR+	2000+	2500+

**City living in the areas:** Centre, Zeeheldenkwartier, Duinoord

**Up market:** Statenkwartier, Archipel

**International Schools:**

- International European School – Primary
- Duitse International School

**Residential living:** Bezuidenhout, Benoordenhout

**International Schools:**

- HSV International Primary School (Haagsche Schoolvereniging)
- British International School
- European School – Secondary
- Lighthouse Special Education
- International Waldorf School The Hague
- Lycée Vincent van Gogh La Haye-Amsterdam (Scheveningen)
- Deutsche Internationale Schule – German International School of The Hague (DiSDH)
- Indonesian Embassy School in The Netherlands / Sekolah Indonesia Nederland

<b>Leiden, Wassenaar, Katwijk &amp; Noordwijk</b>	Rent 2023 Unfurnished (Semi-F) Min. – Max.	Rent 2023 (Furnished) Min. – Max.
<b>Leiden centre and surroudings</b>		
1 bedroom	950-1800	1250-2000
2 bedroom	1500+	1450-2700
3 bedroom	1650+	1700+
Family house 4/5 BR+	1850-4000+	2000+
<b>Wassenaar</b>		
1 bedroom	1200-2400	1350-3000+
2 bedroom	1500-4000	1550-2900
3 bedroom	1650-2800	1750-3700+
Family house 4/5 BR+	1850-4000+	2000-2600+
<b>Noordwijk   Katwijk</b>		
1 bedroom	1150-2050	1200-2100
2 bedroom	1450-2050	1500-2500
3 bedroom	1600+	1750-2700+
Family house 4/5 BR+	1800+	1900+

**International Schools:**

- American School of The Hague (Wassenaar)
- International School Wassenaar – Rijnlands Lyceum
- Elckerlyc International School (Leiden)
- Rijnlands Lyceum Oegstgeest (Oegstgeest)
- The British School in The Netherlands – Senior School Voorschoten
- Indonesian School of The Hague (Wassenaar)

<b>Delft - Zoetermeer</b>	Rent 2023 Unfurnished (Semi-F) Min. – Max.	Rent 2023 (Furnished) Min. – Max.
<b>Delft</b>		
1 bedroom	1050-1500	1250-2100+
2 bedroom	1350-2200	1550-2800
3 bedroom	1550-2800+	1750-3300+

Family house 4/5 BR+	1750-3700+	1850-2600+
<b>Zoetermeer</b>		
1 bedroom	1150-2200	1350-3000+
2 bedroom	1250-2400+	1550-2700
3 bedroom	1450-2800	1750-3500+
Family house 4/5 BR+	1650-2900+	2100+

International Schools:

- International School Delft

<b>Rotterdam (Rott &amp; Schiedam)</b>	Rent 2023 Unfurnished (Semi-F) Min. – Max.	Rent 2023 (Furnished) Min. – Max.
<b>Rotterdam centre and surroundings</b>		
1 bedroom	1250-1700	1500-2100
2 bedroom	1450-2300+	1600-2700
3 bedroom	1550-2800	1750-2000+
Family house 4/5 BR+	1800+	1900+
<b>Schiedam</b>		
1 bedroom	1000-1600	1250-1700
2 bedroom	1200+	1400+
3 bedroom	1350-2700	1550+
Family house 4/5 BR+	1500-2600	1650-2600+

International Schools:

- Rotterdam International Secondary School (RISS) at Wolfert van Borselen
- Japanese School of Rotterdam
- Harbour International
- Nord Angelia International School of Rotterdam

<b>Utrecht and Amersfoort</b>	Rent 2023 Unfurnished (Semi-F) Min. – Max.	Rent 2023 (Furnished) Min. – Max.
<b>Utrecht centre and surroundings</b>		
1 bedroom	1050-1900	1400-2200
2 bedroom	1450-2500	1650-2800
3 bedroom	1650-3000	1850+
Family house 4/5 BR+	3800+	2200-4000

<b>Amersfoort</b>		
1 bedroom	1200-1500	1300-1900
2 bedroom	1500-2100	1600+
3 bedroom	1750+	1800+
Family house 4/5 BR+	1900-2500	1800+

International Schools:

- International School Utrecht (ISU)

<b>Eindhoven Area (Eind, Veld, Veghel)</b>	<b>Rent 2023 Unfurnished (Semi-F) Min. – Max.</b>	<b>Rent 2023 (Furnished) Min. – Max.</b>
<b><i>Eindhoven</i></b>		
1 bedroom	1300-1900	1100-1950
2 bedroom	1450-3200+	1550-2200+
3 bedroom	1500-2700	1650-4200
Family house 4/5 BR+	1750-10000	1850-5000+
<b><i>Veldhoven</i></b>		
1 bedroom	1200-1800	1250+
2 bedroom	1400-1900	1650+
3 bedroom	1500-2200	1700+
Family house 4/5 BR+	no available properties	no available properties
<b><i>Veghel</i></b>		
1 bedroom	no available properties	no available properties
2 bedroom	no available properties	1400+
3 bedroom	1500	no available properties
Family house 4/5 BR+	1600+	2250

**International Schools:**

- International School Eindhoven (ISU)

<b>Maastricht Area (Maastricht, Sittard, Roermond, Weert)</b>	<b>Rent 2023 Unfurnished (Semi-F) Min. – Max.</b>	<b>Rent 2023 (Furnished) Min. – Max.</b>
<b><i>Maastricht</i></b>		
1 bedroom	800-1600	1000-1800
2 bedroom	1000-2100+	1300-2200
3 bedroom	1150-2500	1600-2600
Family house 4/5 BR+	1400-3000+	1700+
<b><i>Sittard</i></b>		
1 bedroom	750-1750	900-1250
2 bedroom	900-1700	1200+
3 bedroom	1000-1900	1300+
Family house 4/5 BR+	1400-2200	1600+
<b><i>Roermond</i></b>		
1 bedroom	800-1300	900-1500
2 bedroom	1100	1150-1800
3 bedroom	1100+	1400+
Family house 4/5 BR+	1200-1400	1500
<b><i>Weert</i></b>		
1 bedroom	800-1200	800-1100
2 bedroom	1000+	1050-2200
3 bedroom	1100-1400	no properties available
Family house 4/5 BR+	no properties available	no properties available

International Schools:

- United World College Maastricht (UWC)
- Japanese Supplementary School

<b>Breda &amp; Tilburg</b>	Rent 2023 Unfurnished (Semi-F) Min. – Max.	Rent 2023 (Furnished) Min. – Max.
<b>Breda</b>		
1 bedroom	990-1300	1100-2100
2 bedroom	1150-1900	1350-2100
3 bedroom	1250-2500	1350-2300
Family house 4/5 BR+	1500-3200	1450-2300
<b>Tilburg</b>		
1 bedroom	850-1250	900-2000
2 bedroom	1000-1450	1250-2200
3 bedroom	1150-1550	1400-2000
Family house 4/5 BR+	1450+	1700+

International Schools:

- International School of Breda

<b>Nijmegen and Arnhem</b>	Rent 2023 Unfurnished (Semi-F) Min. – Max.	Rent 2023 (Furnished) Min. – Max.
<b>Nijmegen</b>		
1 bedroom	1200-1650	1350-1800+
2 bedroom	1350-1750	1400-1800
3 bedroom	1400-2450	1300-1900
Family house 4/5 BR+	1500-2500+	1500-2800
<b>Arnhem</b>		
1 bedroom	750-1350	800-1200
2 bedroom	990-1400	1000-3200
3 bedroom	1200-1650	1350-1900
Family house 4/5 BR+	1450-2000	1450+

International Schools:

- Arnhem International School

<b>NORTH HOLLAND</b> Alkmaar, Hoorn, Volendam and Enkhuizen	Rent 2023 Unfurnished (Semi-F) Min. – Max.	Rent 2023 (Furnished) Min. – Max.
<b>Alkmaar</b>		
1 bedroom	950-1400	1100-1600
2 bedroom	1300-2300	1500+
3 bedroom	1450+	1550-1700
Family house 4/5 BR+	1600-2200	1600-2200
<b>Hoorn</b>		

1 bedroom	1200-1500	1300-2100
2 bedroom	1400+	1450+
3 bedroom	no available properties	1350+
Family house 4/5 BR+	no available properties	no available properties
<b>Volendam</b>		
1 bedroom	1200	1250
2 bedroom	1450	no available properties
3 bedroom	1550+	1500-1850
Family house 4/5 BR+	no available properties	1650+
<b>Enkhuizen</b>		
1 bedroom	700-1200	800-1100
2 bedroom	850-1800	1100-1900
3 bedroom	no available properties	no available properties
Family house 4/5 BR+	no available properties	no available properties

<b>Flevoland (Almere, Lelystad)</b>	Rent 2023 Unfurnished (Semi-F) Min. – Max.	Rent 2023 (Furnished) Min. – Max.
<b>Almere</b>		
1 bedroom	1250-1550	1400-1900+
2 bedroom	1400-2400	1500-2200
3 bedroom	1600-2200	1700-2500
Family house 4/5 BR+	2000-2400	1750-3000
<b>Lelystad</b>		
1 bedroom	1000-1250	1100-1500
2 bedroom	1300+	1550-1900
3 bedroom	1450-1700	1550+
Family house 4/5 BR+	1650-2200+	1650-2300

**International Schools:**

- International School Almere
- International Primary School Almere